

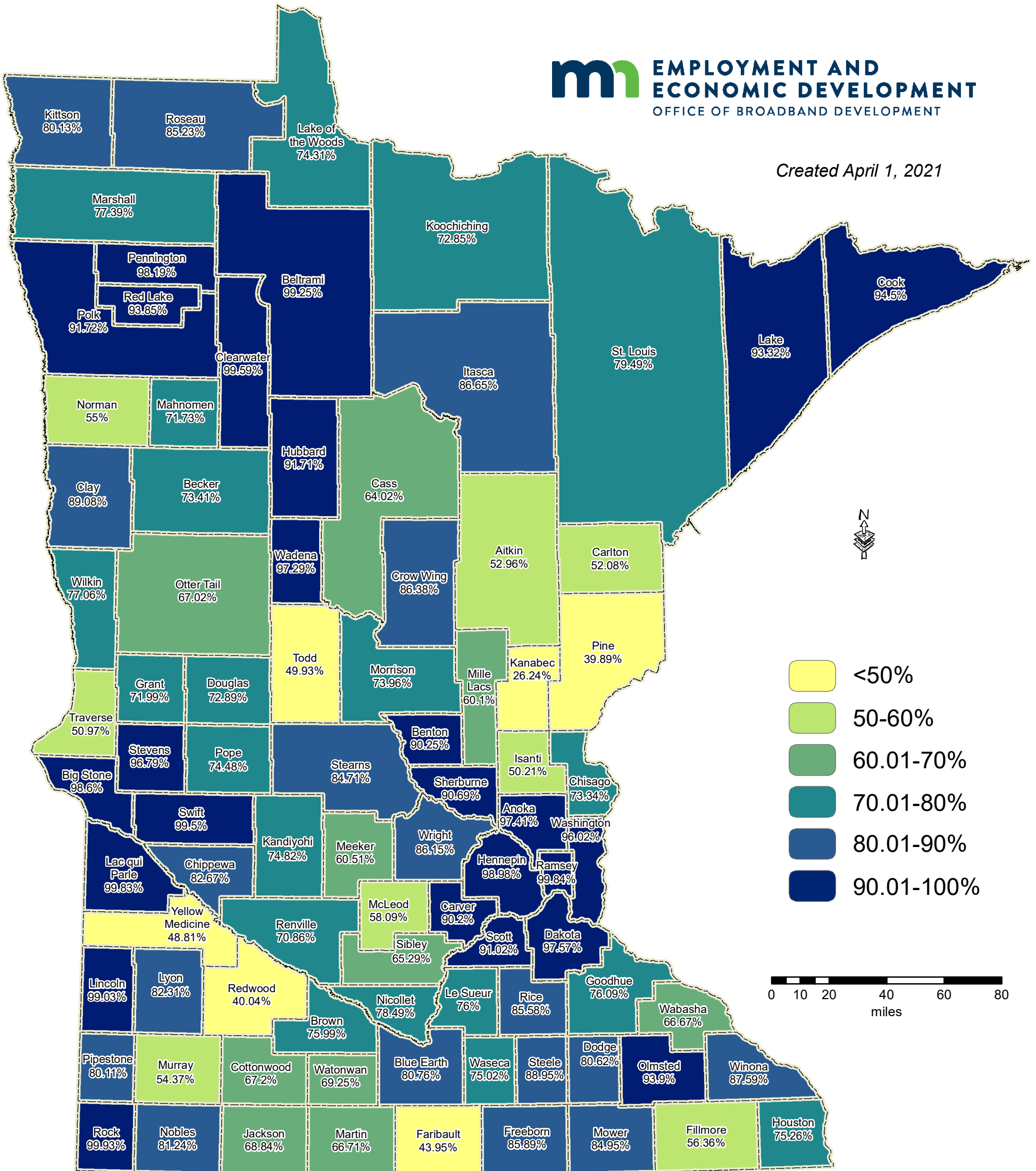
# 2021 Broadband Availability in the State of Minnesota

## Percentage of Households Served by Wireline Broadband Service by County

At Least 100 Mbps Download/20 Mbps Upload Speeds  
 Statewide Availability: 88.91%, Rural: 75.19%

**mn** EMPLOYMENT AND ECONOMIC DEVELOPMENT  
 OFFICE OF BROADBAND DEVELOPMENT

Created April 1, 2021



This map was prepared by Connected Nation under contract with the Minnesota Department of Employment and Economic Development. The map represents areas of broadband service availability based on provider data submitted to and analyzed by Connected Nation. This data is current as of December 31, 2020.

Additional maps and data are available at <http://mn.gov/deed/programs-services/broadband/maps>

Upon request, this information can be made available in alternate formats for people with disabilities by contacting the DEED Office of Broadband Development at 651-259-7610.

Submit questions or recommended changes to:  
 DEED.broadband@state.mn.us

© Copyright 2021, State of Minnesota, St. Paul, MN