



***2016 Border-to-Border Broadband Grant Program  
Webinar - August 16, 2016***

**Low Income Areas  
Availability and Adoption Grant**

# Questions during Webinar

- Use Chatbox function on Web version
- Email us at [deed.broadband@state.mn.us](mailto:deed.broadband@state.mn.us)
- Ask a question via the conference call phone connection, when we pause for questions.

# Office of Broadband Development

## Roles and Responsibilities - Highlights

- Provide technical assistance to communities and providers
- Administer the Border to Border broadband grant program
- Measure and map broadband availability across the state
- Inform and support state broadband policy discussions
- Clearinghouse for state and federal program resources
- Measure and Analyze community anchor institution needs
- Support digital inclusion (literacy and affordability)
- Build community broadband needs into local planning processes
- Dig Once/conduit/ROW mgmt/permitting

# Border to Border Broadband Development Grant – Overview

- \$35 M one-time appropriation
- \$5 M for underserved, \$500,000 for low income, remainder for applications for unserved areas
- Distributed in single competitive grant round
- Technology must be scalable to at least 100Mbps Up/Down
- Cap of \$5M per grant award
- At least 1 to 1 match (50% of eligible expenses) required (More points awarded for higher match)
- Grant awards will be geographically dispersed
- All invoiced work must be complete by June 30, 2019

# 2016 Border to Border Broadband Development Grant – Overview

- Criteria for unserved and underserved areas:
  - **Unserved:** areas of the state with less than 25Mbps down and 3 Mbps up (the FCC minimum)
  - **New definition for underserved:** areas of the state with more than 25/3 but less than 100Mbps down and 20Mbps upload

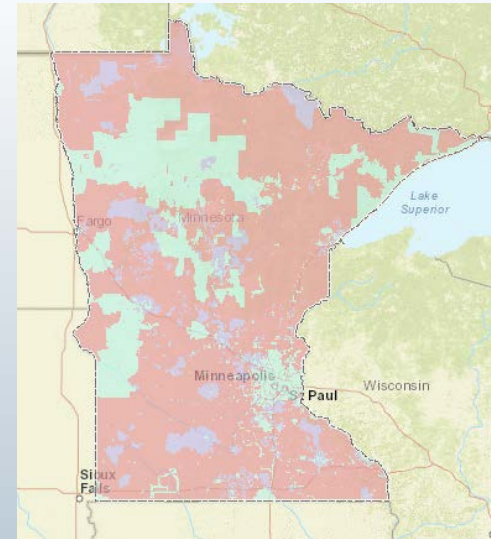
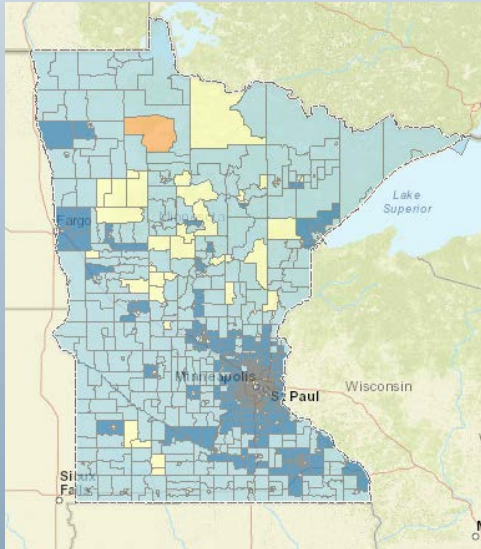
# 2016 Border to Border Broadband Development Grant – Resources

## Grant Application & FAQ

<http://mn.gov/deed/programs-services/broadband/grant-program>

## Interactive Eligibility Map

<http://map.connectmn.org/>



## Recorded Grant Workshop Webinar

(link also on website)

<https://intercall.webex.com/intercall/ldr.php?RCID=3016d75d4806c5834511b0c9fd9ee2f1>

# Legislative Language for new grant

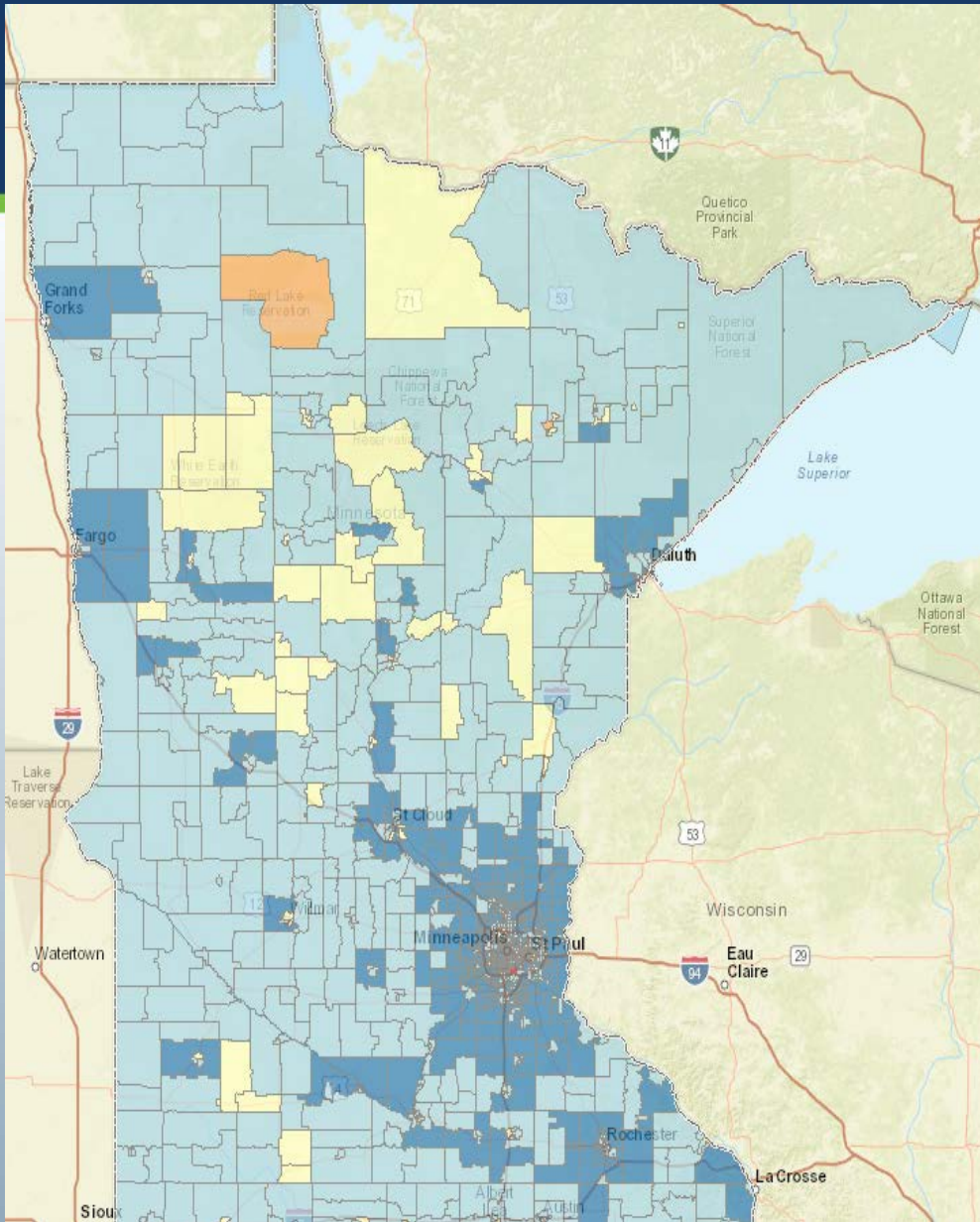
- \$500,000 may be awarded to projects that propose to expand the availability and adoption of broadband service to areas that contain a significant proportion of low-income households.
- “Low-income households” means households whose household income is less than or equal to 200 percent of the most recent calculation of the United States federal poverty guidelines published by the United States Department of Health and Human Services, adjusted for family size.

# Criteria for Low Income Area Funding

- \$500,000 for Broadband Availability and Adoption Projects in Low Income Areas (in unserved and underserved areas)
- Low Income households defined as at or below 200% of federal poverty guidelines
- Funding is for infrastructure and adoption costs
- Adoption costs eligible for reimbursement include examples such as discounted monthly service cost, digital literacy training, public computing center, discounted devices.

# FAQs on Low Income Projects

- Questions 44 through 50 in FAQ document
- For projects that expand availability and adoption (no preassigned ratio)
- Must also be in an area that is unserved or underserved
- Limited to 50% of project costs and a maximum grant request of \$500,000—project costs must include costs related to infrastructure and adoption
- Prevailing wage requirements apply if grant request is for \$200,000 or more and there are costs associated with installing middle mile infrastructure



## Map showing eligible low income areas by census tract



# Border to Border Broadband Development Grant –Application Process and Timeline

- Application period opened on July 22, 2016
- Provider Notification Deadline: August 22, 2016
- Deadline: October 3, 2016 at 4 p.m., into the OBD offices, St. Paul.
- Application review & scoring period 8 weeks
- Target to make awards by late November

# 2016 Border to Border Broadband Development Grant – Scoring Highlights

- Amount of increase of broadband speeds
- % matching funds
- Sustainability (Financial, partnerships)
- Realistic project plan and timeline
- Community support
- Economic development potential
- Economic distress of area
- Benefit to anchor institutions

# Digital Inclusion (Availability & Adoption)

## Best practices discussion

Bernadine Joselyn – the Blandin Foundation

Sam Drong – PCs for People

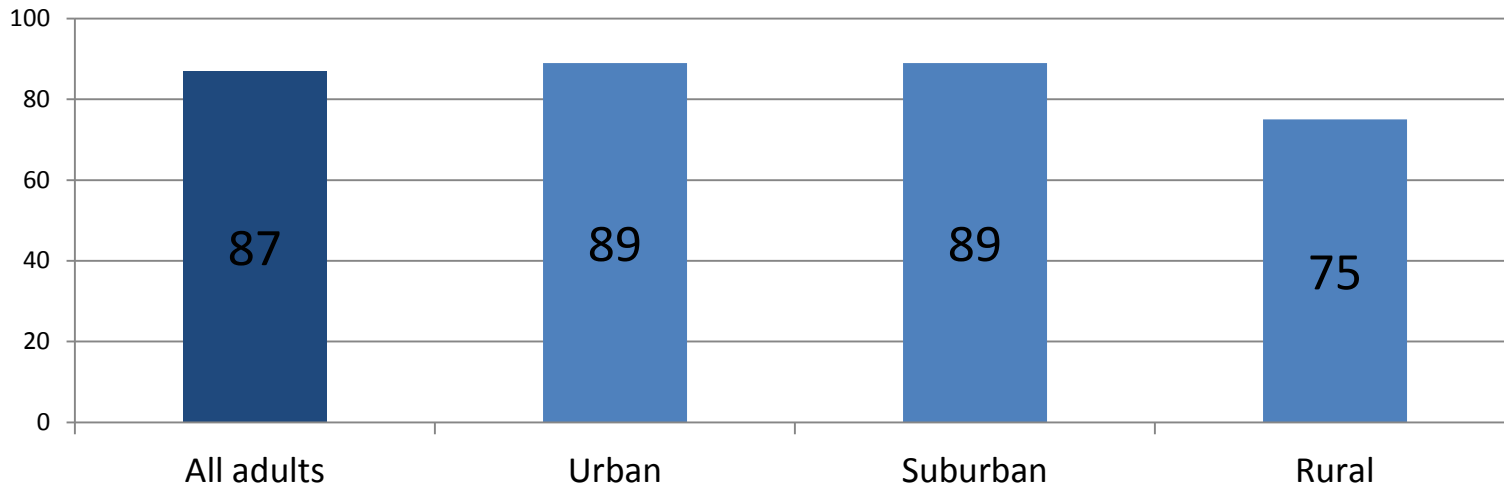
- Best practices on how to identify underserved households
- Best practices on how to address Digital Inclusion challenges & opportunities

# Now Speaking:

- Sam Drong, Program Director, PCs for People

# Internet Use

(Pew Research 2015)



Summary of Reasons	
Relevance (not interested + waste of time + too busy + don't need/want)	34%
Usability (difficult/frustrating + too old + don't know how + physically unable + worried about virus/spam/hackers/etc.)	32%
Price (too expensive + don't have computer)	19%
Lack of availability / Access	7%

# Identifying Underserved

- Schools (free/reduced lunch program)
- Headstart (or other community action organization)
- Workforce centers
- Immigrant resource centers
- Senior citizen centers

# Now speaking:

- Bernadine Joselyn, Director of Public Policy & Engagement, the Blandin Foundation

# This Work Matters.



- A growing digital divide threatens our democracy.
- The ability to use the Internet = access to opportunity.
- Public investment in adoption is good public policy.

# Adoption programs *can* and *do* work:

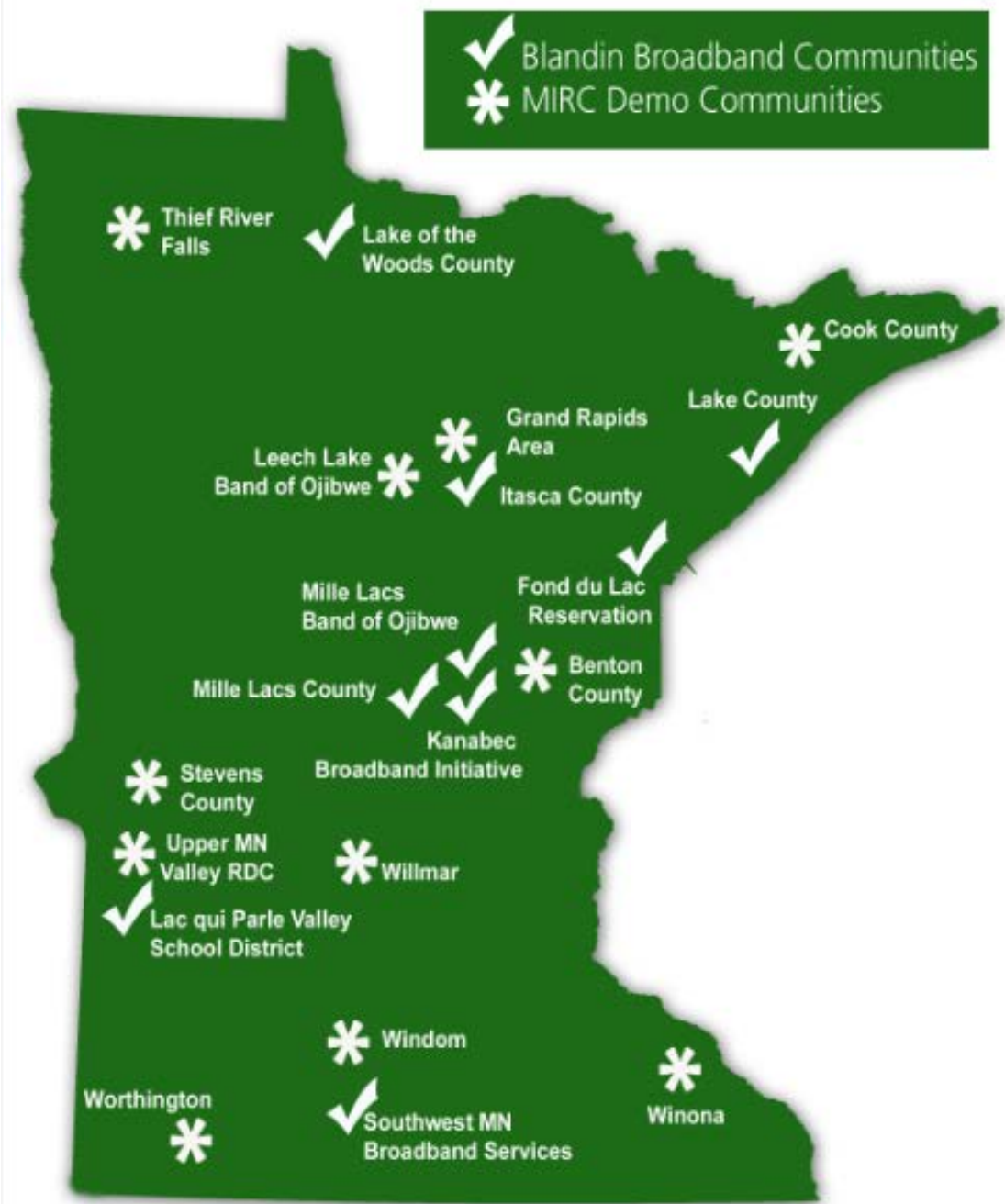
- Broadband adoption in *Blandin Broadband Communities* grew 15% faster than in the rest of rural Minnesota.



Blandin Broadband Communities



MIRC Demo Communities



# Lots of Good Work Being Done in Minnesota

- An immigrant resource center in **Winona** offers digital literacy training in Hmong, and Spanish. Elsewhere, Internet adoption curricula is being developed in Karen and Somali.
- A consortium of nine school districts in **Stevens County** has developed broadband-based distance learning services for students with disabilities.

# More Adoption Program Examples

- **St. Louis, Martin, Mille Lacs, Nobles, Beltrami** and other rural counties are building public wifi hotspots.
- Minnesota West Community & Technical College in **Worthington** is developing a two-credit college course on digital literacy targeted toward high school and college students.
- **Nobles County** Integration Collaborative is training immigrants to teach basic community skills in their native language.

# More examples . . . .

- **Carlton County** provides technology training and resources for enrichment activities and parenting skills to pre-K students and their families.
- The **City of Isle** offers computer classes and a Wi-Fi public access site in the Mille Lacs Lake area.
- **Martin County** has developed a technology learning workshop on mobile app creation for students.

# And more . . . .

- **Redwood Area Development Corporation** hosts a Lunch-N-Learn technology series, while promoting the need for better broadband.
- **Brainerd Public Schools** provides mobile devices and training to families in the Early Childhood and Family Education programs.
- **Fond Du Lac Band of Lake Superior Chippewa**, hosts an *Age to Age* mobile learning program, where 6<sup>th</sup> graders instruct Elders on using mobile devices.

# And more examples . . . .

- **Lake of the Woods County Pioneer Youth Center** is providing interactive learning experiences for at-risk youth through access to Wi-Fi to enhance student success.
- **Leech Lake Band of Ojibwe** is now using its Temporary Employment Program to host digital literacy program at four locations on the Leech Lake Reservation.

# Good Partners Make Good Projects:

- Libraries
- Chambers of Commerce
- School districts / Community Ed
- Economic development agencies
- Community and technical colleges

*Blandin Foundation can help you connect.*



## Conference:

- September 13-14, 2016
- Greysolon Ballroom  
Duluth, MN

<http://broadband.blandinfoundation.org/>



# 2016 Border to Border Broadband Development Grant – Status and Timeline

- The application, eligibility maps, and FAQ are now published on the OBD website
- Application window opened on July 22, 2016
- Provider Notification letters out by August 22, 2016
- **Application Deadline:** October 3<sup>rd</sup>, 2016 4 p.m., OBD office in St. Paul
- Awards to be made by late November

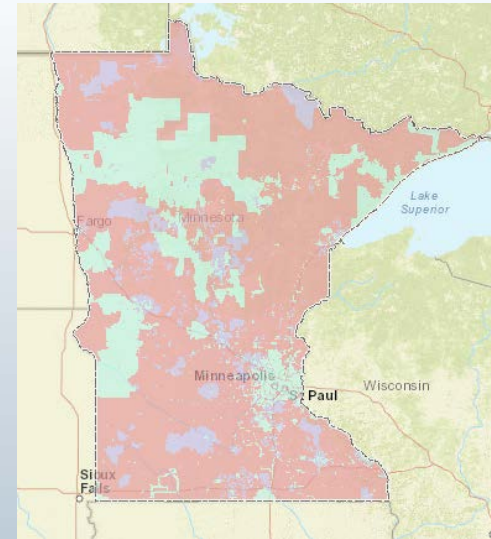
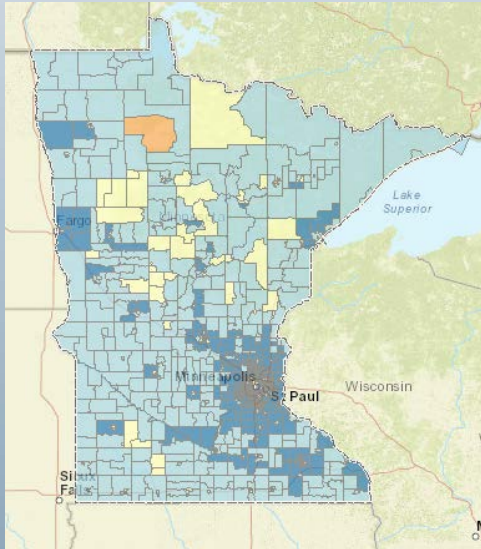
# 2016 Border to Border Broadband Development Grant – Resources

## Grant Application & FAQ

<http://mn.gov/deed/programs-services/broadband/grant-program>

## Interactive Eligibility Map

<http://map.connectmn.org/>



## Recorded Grant Workshop Webinar

(link also on website)

<https://intercall.webex.com/intercall/ldr.php?RCID=3016d75d4806c5834511b0c9fd9ee2f1>

# Questions?

## For more information, contact:

- Danna Mackenzie, OBD Director, 651-259-7611 [danna.mackenzie@state.mn.us](mailto:danna.mackenzie@state.mn.us) or,
- Jane Leonard, Broadband Grants Administrator, 651-259-7635 [jane.leonard@state.mn.us](mailto:jane.leonard@state.mn.us) or,
- Diane Wells, Telecommunications Manager (can answer policy, challenges, & mapping questions), 651-259-7613 [diane.wells@state.mn.us](mailto:diane.wells@state.mn.us) or,
- [deed.broadband@state.mn.us](mailto:deed.broadband@state.mn.us)
- <http://mn.gov/deed/broadband>