

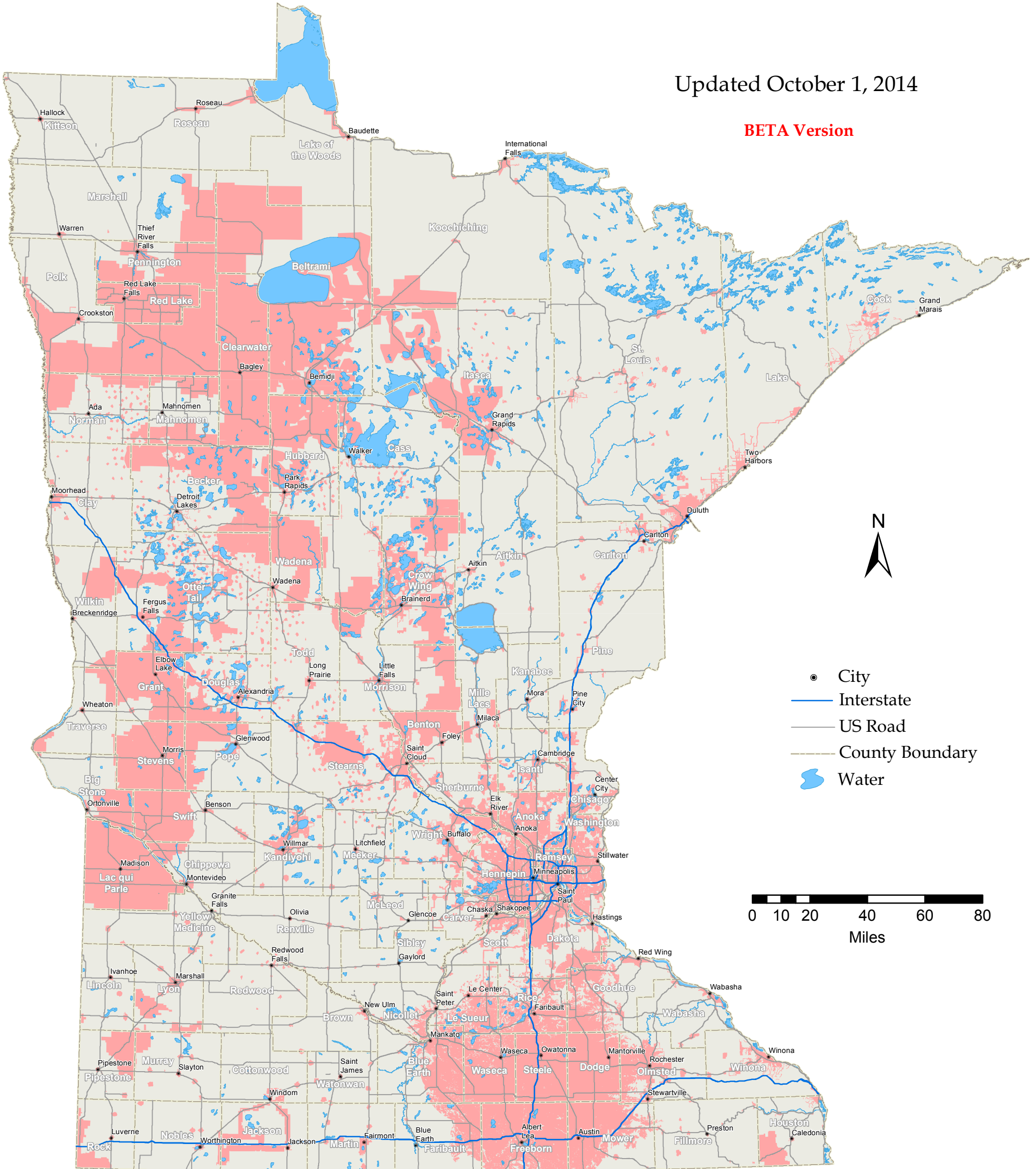
Broadband Service Inventory for the State of Minnesota

Advertised Speeds of at Least 25 Mbps Downstream and 3 Mbps Upstream

Submit questions or recommended changes to: maps@connectmn.org

Updated October 1, 2014

BETA Version



As required by the US Department of Commerce's State Broadband Initiative, if broadband service is available to at least one household in a census block, then for mapping purposes, that census block is reported to have some level of broadband availability. As such, broadband availability at an exact address location cannot be guaranteed. Providers supplying more specific data than census block are displayed as such.

This map represents areas of broadband service availability determined by ongoing, in-depth technical analysis of provider networks and accommodations for the impact of external factors on service quality. Satellite broadband services may also be available.

Map users are encouraged to participate in improving broadband data granularity through data validation and field testing efforts.

Learn more about this and other broadband mapping facts at www.connectmn.org.

© Copyright 2015, State of Minnesota, St. Paul, MN

Used and Displayed by Connect Minnesota, LLC and Connected Nation, Inc. under license agreement