

Making 700 MHz Wireless Work in Rural Minnesota

Blandin Broadband Webinar
April 10, 2014

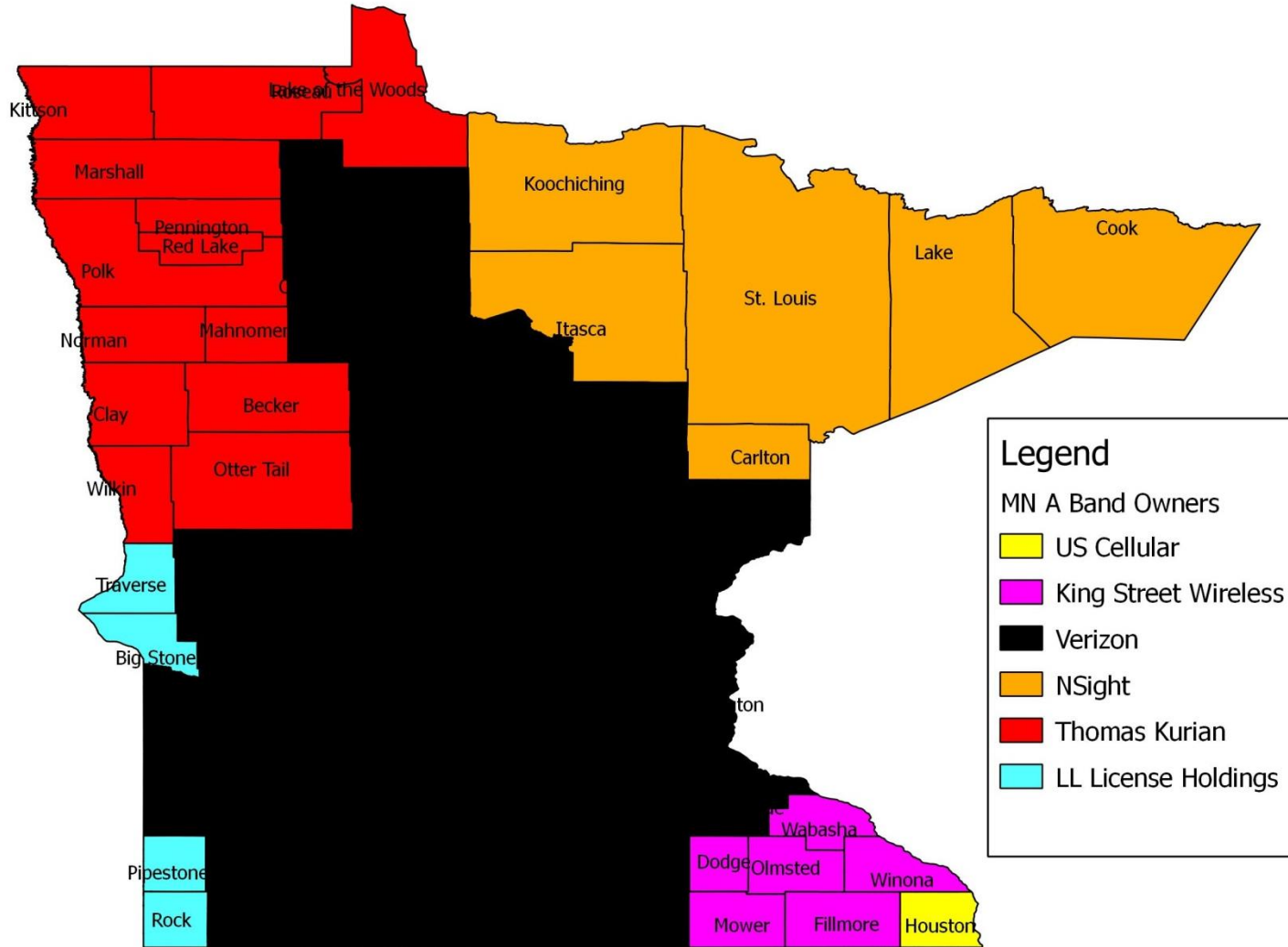
Tamra Johnson
CEO, Dryad Communications



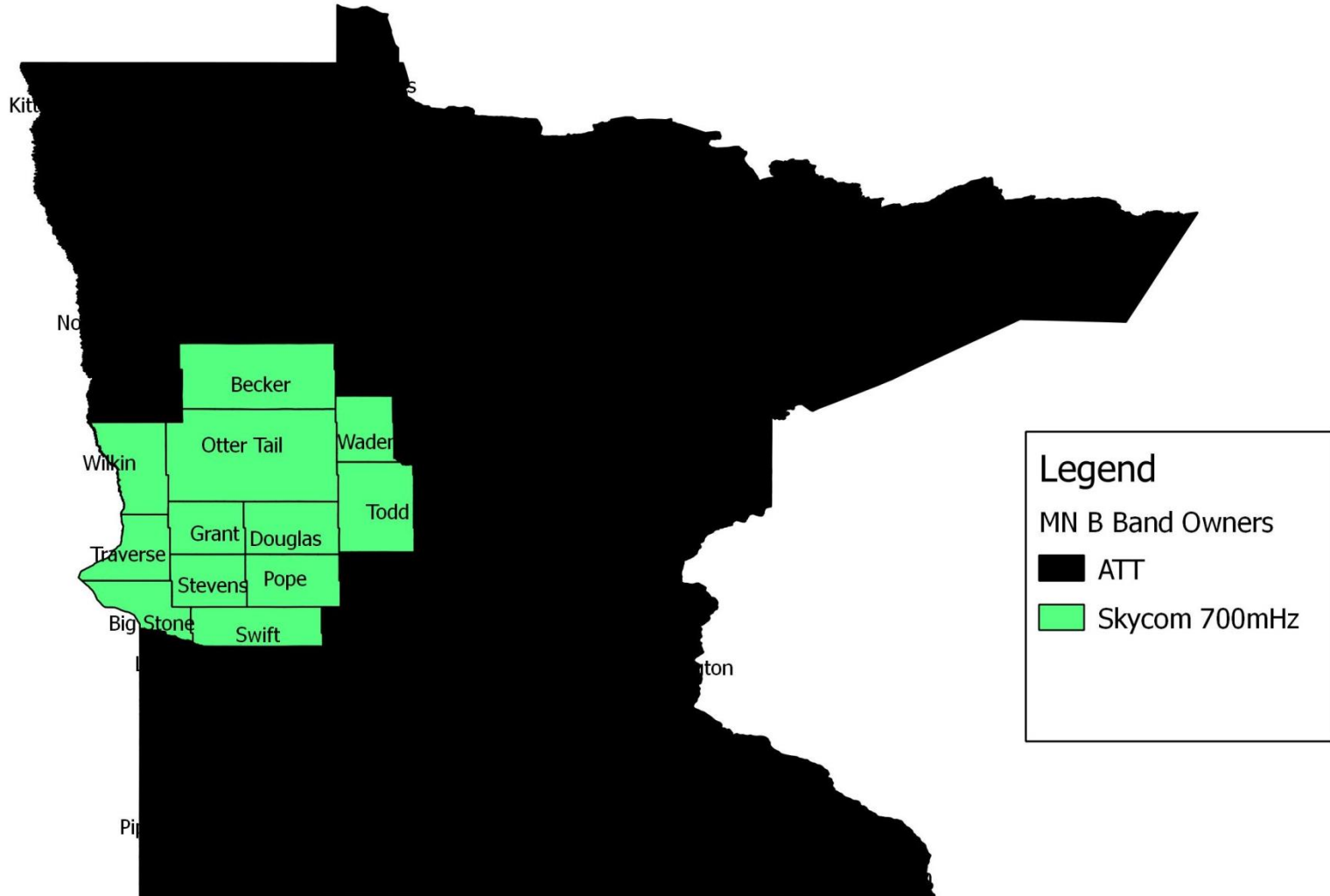
Blandin Foundation™
STRENGTHENING RURAL MINNESOTA

DRYAD
COMMUNICATIONS 

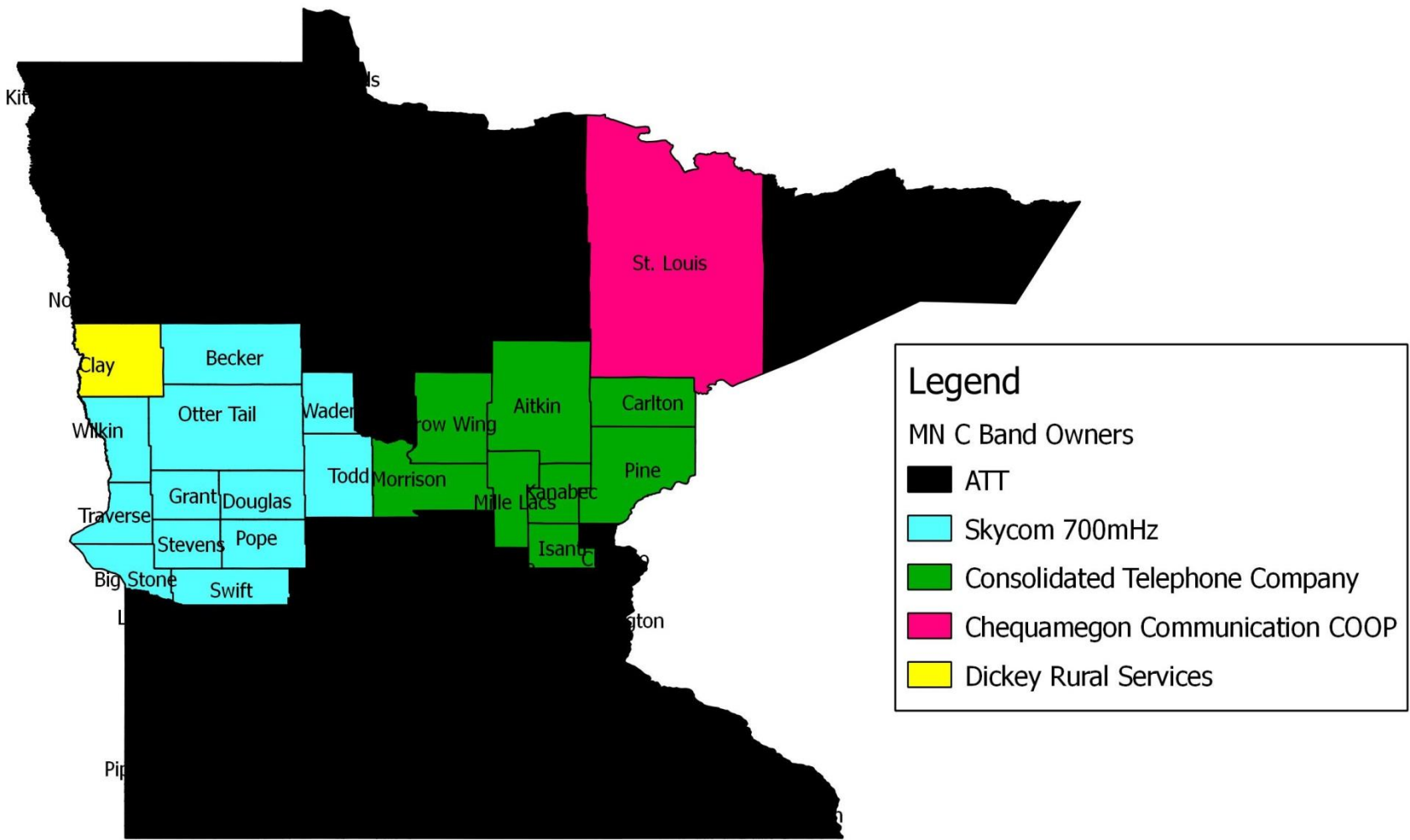
MN 700 MHz A Band Ownership



MN 700 MHz B Band Ownership



MN 700 MHz C Band Ownership

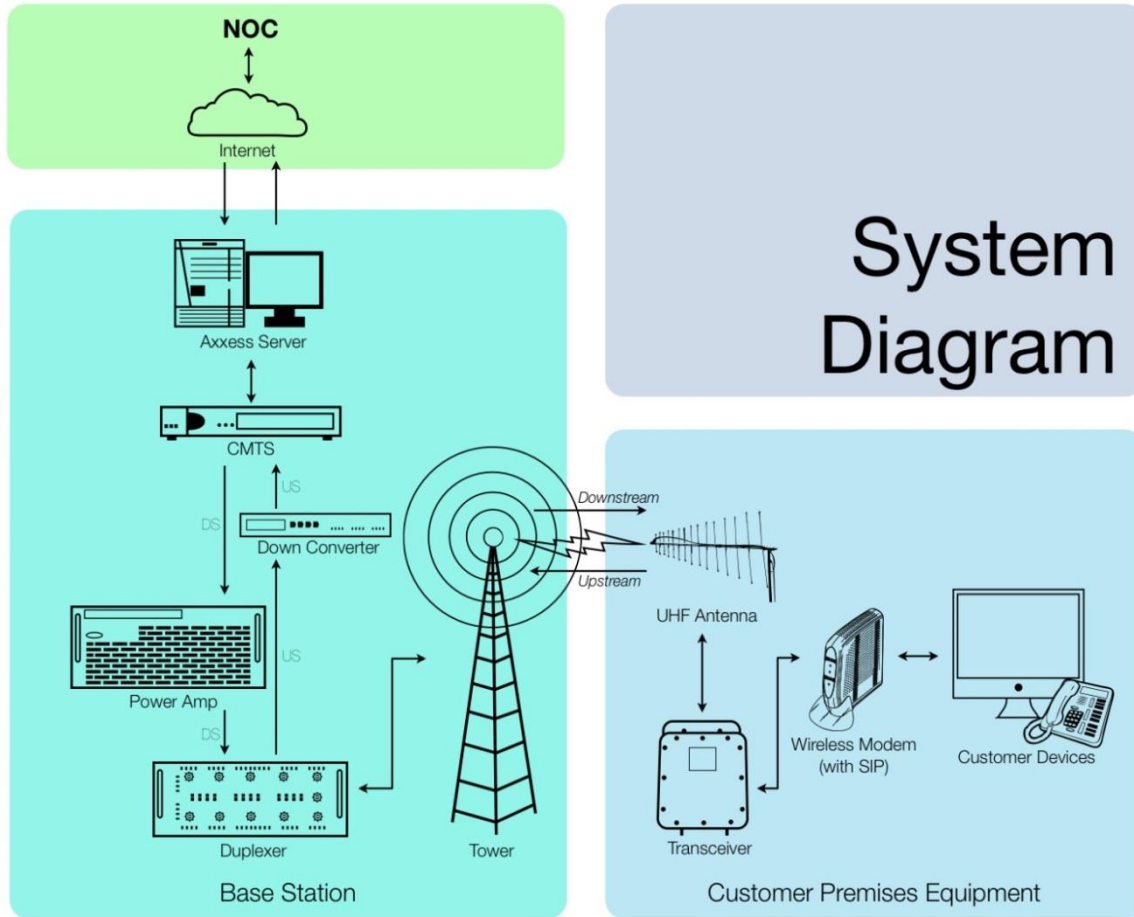


Dryad Communications

- Fixed wireless broadband provider, using 700 MHz licensed spectrum and wireless DOCSIS to provide 15-25 mile coverage
 - Utilize existing infrastructure wherever possible
 - Can serve up to 200 customers per site, offering broadband speeds, sharing aggregate 27 Mbps
- Have two operating systems in South Dakota/Nebraska, providing service to Santee Sioux and Rosebud Sioux tribal lands
- Evaluating non-reservation opportunities in South Dakota Black Hills
- Work underway in part of Minnesota



Wireless DOCSIS System Diagram



System
Diagram



Tower Installation and Customer Premise Equipment



Tower Antenna



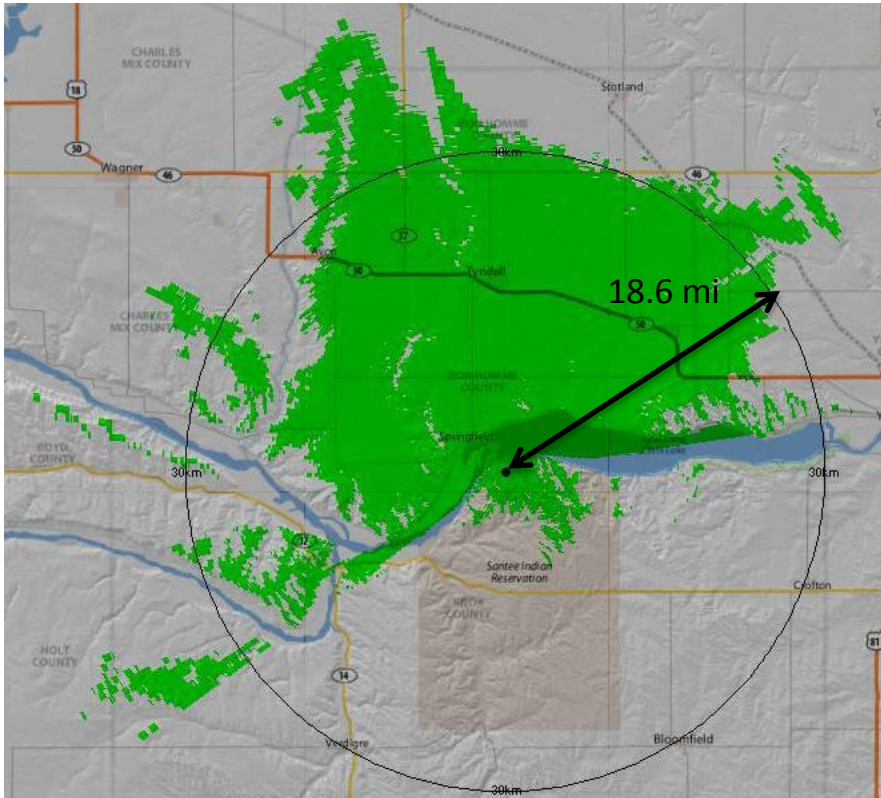
Rack of Base Station
Equipment



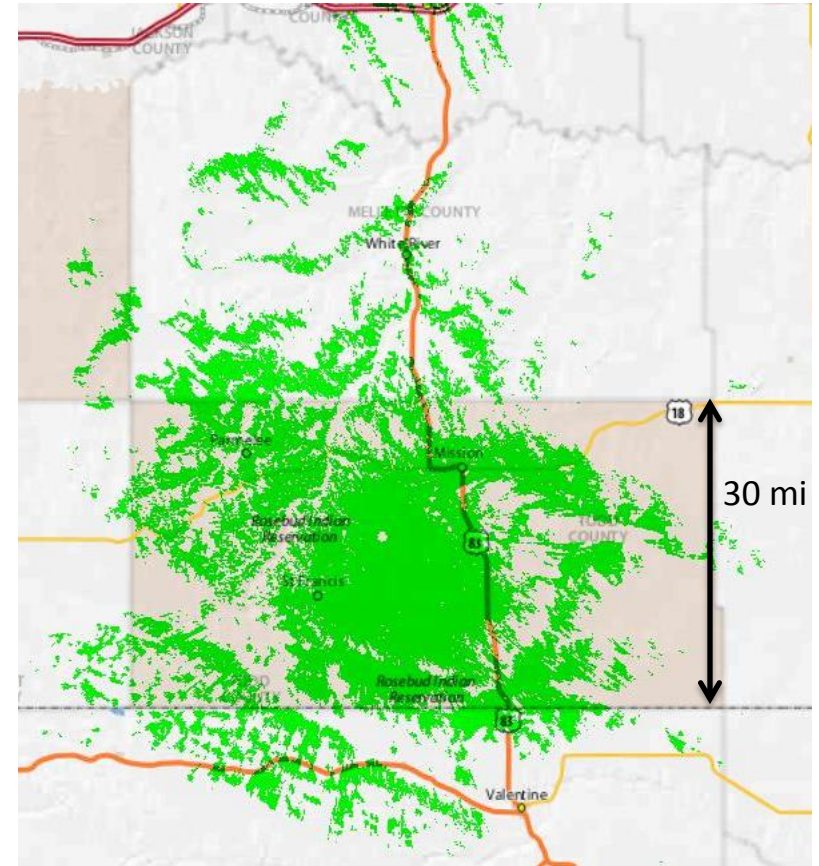
Customer Premise
Antenna



DOCSIS System Coverage



Santee Coverage



Rosebud Coverage

